

Radar Flushing Unit SLP 07S



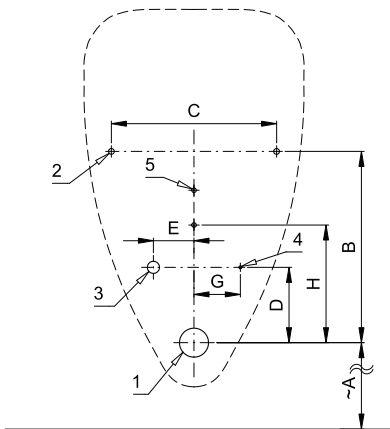
Characteristics



- radar flushing unit for urinals NOVA PRO FELIX 26 000; NOVA PRO ALEX 66 000; RENOVA Nr. 1 1 235 300; NOVA PRO M36 000; RENOVA Nr.1 PLAN 235 100 (Kolo); SELNOVA 500 344 (Geberit)
- economy flushing by 1 liter of water
- easy installation by the help of paper drill template
- whole flushing unit is placed behind the urinal
- system reacts only on the direct use of the urinal (it analyses changes, which are proceeded inside of the urinal, when a liquid is flowing through)
- adjustable flushing time 0,5 - 15,5 s
- parameters adjustment by remote control SLD 04 without the necessity to dismantle the urinal from the wall (acoustic setting indication)
- automatic flushing after each 6 hours non-use
- possibility to regulate a water flow by the angle valve
- radar flushing unit recharges a water to the siphon after each flushing

Installation Drawing

SLP 07 ALEX



- 1 - waste outlet Ø 50 mm
- 2 - holes for fitting
- 3 - water supply
- 4 - power supply
- 5 - holes for wall plug

Technical Specification

Operating voltage

- SLP 07S 24 V DC
- SLP 07Z 230 V AC/50 Hz
- SLP 07B 6 V

Power input

- operating by 24 V DC 8 W
- operating by 6 V 3 W

Recommended flow pressure

0,1 - 0,6 MPa

Rate of flow

18 l/min (inf. data)

Water inlet

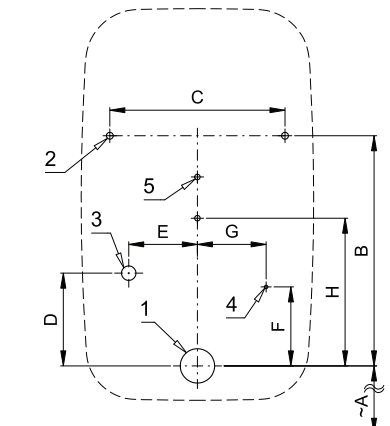
male thread G 1/2"

Water outlet

inlet fitting with a rubber sealing

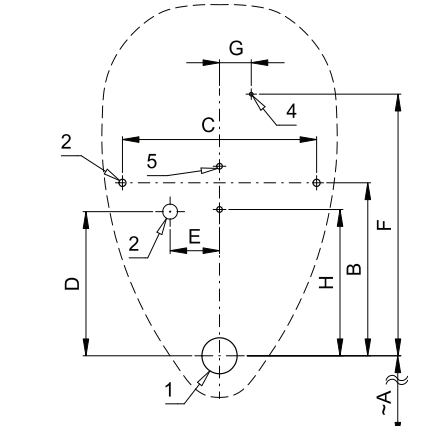


SLP 07 NOVA PRO

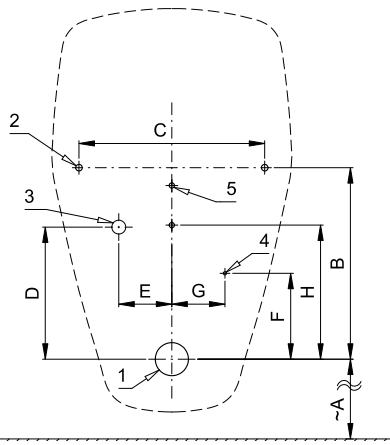


- 1 - waste outlet Ø 50 mm
- 2 - holes for fitting
- 3 - water supply
- 4 - power supply
- 5 - holes for wall plug

SLP 07 FELIX

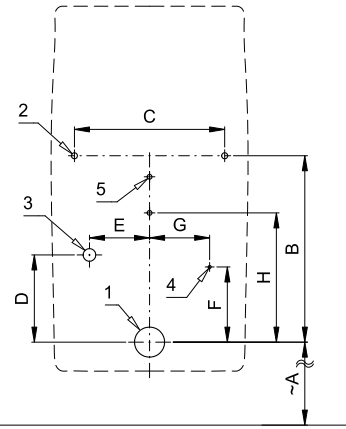


SLP 07 SELNOVA

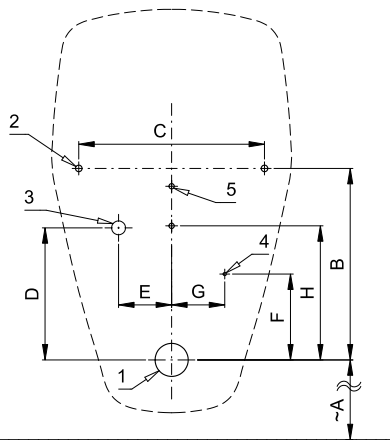


- 1 - waste outlet \varnothing 50 mm
- 2 - holes for fitting
- 3 - water supply
- 4 - power supply
- 5 - holes for wall plug

SLP 07 RENOVA NR. 1 PLAN



SLP 07 RENOVA NR. 1



- 1 - waste outlet \varnothing 50 mm
- 2 - holes for fitting
- 3 - water supply
- 4 - power supply
- 5 - holes for wall plug

Dimensions (mm)	A	B	C	D	E	F	G	H
ALEX	320	330	285	130	70		80	203
FELIX	390	240	275	200	70	360	45	205
NOVA PRO	380	335	255	135	100	115	100	215
SELNOVA	390	290	280	200	80	130	80	203
RENOVA Nr. 1	390	290	280	200	80	130	80	203
RENOVA Nr. 1 PLAN	390	310	250	145	100	125	100	215

* for the height of the front edge of the urinal 650 mm above the floor

Supply Specification

- SLP 07S - Supply No. 11071
- SLP 07Z - Supply No. 01071
- SLP 07B - Supply No. 11076

radar flushing unit on the mounting rail, electromagnetic valve, connecting hoses, angle valve with filter and check valve, inlet fitting with a rubber sealling, siphon, paper drill template, power supply (SLP 07Z), 4 psc. AA alkaline batteries, 1,5 V 2700 mAh with battery case (SLP 07B)

Recommended Accessories

SLZ 01Y	-	Supply No. 05012	power supply 24 V DC for operating of max. 5 pcs. of flushing units
SLZ 01Z	-	Supply No. 05011	power supply 24 V DC for operating of max. 9 pcs. of flushing units
SLZ 04Y	-	Supply No. 05042	power supply 24 V DC on DIN rail, for operating of max. 5 pcs. of flushing units
SLZ 04Z	-	Supply No. 05041	power supply 24 V DC on DIN rail, for operating of max. 9 pcs. of flushing units
SLZ 04X	-	Supply No. 10049	power supply 24 V DC on DIN rail, for operating of max. 15 pcs. of flushing units
SLZ 06	-	Supply No. 05060	power supply 24 V DC for operating of max. 1 pc. of flushing unit
SLD 04	-	Supply No. 07040	remote control for an adjustment of parameters
SLA 10	-	Supply No. 06100	stainless steel sieve for urinal NOVA
SLA 11	-	Supply No. 06110	deodorising urinal screen - orange colour, mango scent
SLA 11A	-	Supply No. 06111	deodorising urinal screen - red colour, kiwi and grapefruit scent
SLA 11B	-	Supply No. 06112	deodorising urinal screen - transparent colour, honeysuckle scent
SLA 11C	-	Supply No. 06113	deodorising urinal screen - blue colour, cotton bloom scent
SLR 01L	-	Supply No. 08015	mounting frame to the plasterboard for the urinal with radar flushing unit on the mounting rail
SLA 36	-	Supply No. 06360	set of 4 pcs. alkaline batteries AA 1,5 V, 2700 mAh (for models with index B)