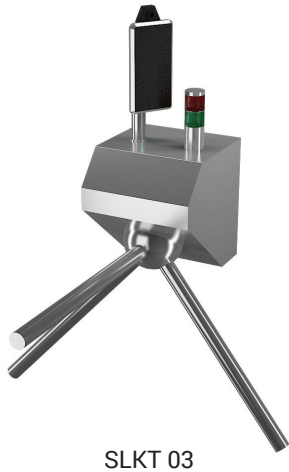


Turnstile with a Thermo-Visual Camera SLKT 03



SLKT 03



SLKT 03S

Characteristics

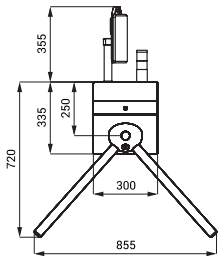
Turniket

- the turnstile will allow the passage of a person only if the person's higher body temperature is not measured and he/she has a correctly worn face mask
- model without an index - wall turnstile
- model with S index - turnstile with a stand for fixing to the floor
- three-arm design
- possibility of two-way passage use
- Go-call function, to ensure comfortable and quick use, the Turnstile arm is released and moves slightly in the direction of passage
- maintenance-free MDD motor
- massive anti-vandal construction
- brushed finish

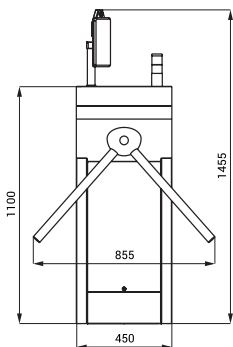
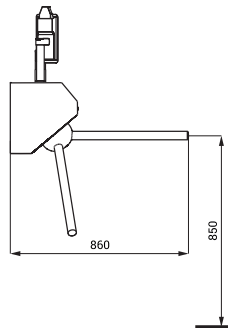
Thermo-visual camera

- real-time face temperature sensing (0.1 - 0.2 s)
- detection of the correct application of the face mask
- audible and light alarm in case of non-compliance with the set conditions
- recording of the entry time
- possibility of connection to the attendance system
- possibility to record rejected entries

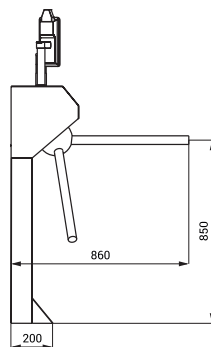
Dimensions



SLKT 03



SLKT 03S



Technical Specification

Dimensions (SLKT 03)

1075 x 855 x 860 mm

Dimensions (SLKT 03S)

1455 x 855 x 860 mm

Operating voltage

230 V AC

Power input

60 W

Supply Specification

SLKT 03 - Supply No. 38030

SLKT 03S - Supply No. 38031

three-arm turnstile, thermo-visual camera, mounting set, power supply

three-arm turnstile with stand for fixing to the floor, thermo-visual camera, mounting set, power supply